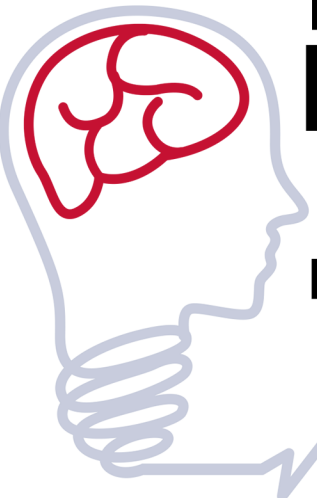


MENTAL ILLNESS



—VS— INTELLECTUAL/ DEVELOPMENTAL DISABILITY

There is no correlation between intelligence and mental illness. Mental Illness, also known as mental health disorder or behavioral health disorder, is not the same as Intellectual or Developmental Disability (IDD). Mental Illness does not directly impact cognitive abilities, but can change a person’s perceptions and thought processes and affect a person’s everyday functioning and ability to relate to others.

An Intellectual or Developmental Disability (IDD) includes many severe, chronic conditions that are due to mental and/or physical impairments. An IDD is characterized by significant limitations both in intellectual functioning (reasoning, learning, problem solving) and in adaptive behavior, which covers a range of everyday social and practical skills.

When mental illness and IDD occur together, the descriptive term used is “dual diagnosis.”

RESOURCES



FOR EMERGENCIES CALL 9-1-1

NATIONAL SUICIDE PREVENTION HOTLINE
800.273.TALK / 800.273.8255

PSYCHIATRIC EMERGENCY SERVICES
512.472.HELP / 512.472.4357

VETERANS CRISIS LINE
800.273.TALK / 800.273.8255

TRAVIS COUNTY SHERIFF’S OFFICE CIT OFFICE
512.854.3430

NON-EMERGENCY TRAVIS COUNTY DISPATCH
512.974.0845, OPTION 3

AUSTIN POLICE DEPARTMENT CIT
512.854.3450

NATIONAL ALLIANCE ON MENTAL ILLNESS (NAMI)
512.420.9810



ONLINE SERVICES

MOBILE CRISIS OUTREACH TEAM
www.integralcare.org/crisis-services

NAMI TEXAS
www.namitexas.org

TEXAS DEPARTMENT OF STATE HEALTH SERVICES
www.dshs.texas.gov/mhservices

VETERANS CRISIS LINE
www.veteranscrisisline.net

TRAVIS COUNTY SHERIFF’S OFFICE

CRISIS INTERVENTION TEAM



COMMUNITY PARTNERSHIP

COMPASSIONATE RESPONSE

COMMITTED TO EXCELLENCE

512.854.3430

www.tcsheriff.org/CIT

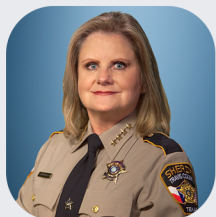
Dear Travis County,

Over 30% of people booked into the Travis County Jail are suffering from some form of mental illness. It pains me to see people incarcerated for crimes they've committed due solely to mental illness. It's not an easy problem to solve, but it's imperative that we find a better way to serve the mentally ill in our community than a jail cell.

The Travis County Sheriff's Office (TCSO) has a dedicated team of Crisis Intervention Deputies who work tirelessly to build strong community partnerships and compassionately connect those affected by mental illness with resources and services. By working together with the families and care-givers of those who are suffering a mental health crisis, we can empower them with real-world solutions that literally change lives for the better.

Deputies trained in the tenets of community based policing enable us to build trust between the mentally ill and law enforcement, which is crucial to achieve a positive outcome in a crisis situation. Our heart is to help, not to punish.

I hope this brochure provides you with useful insight and information.

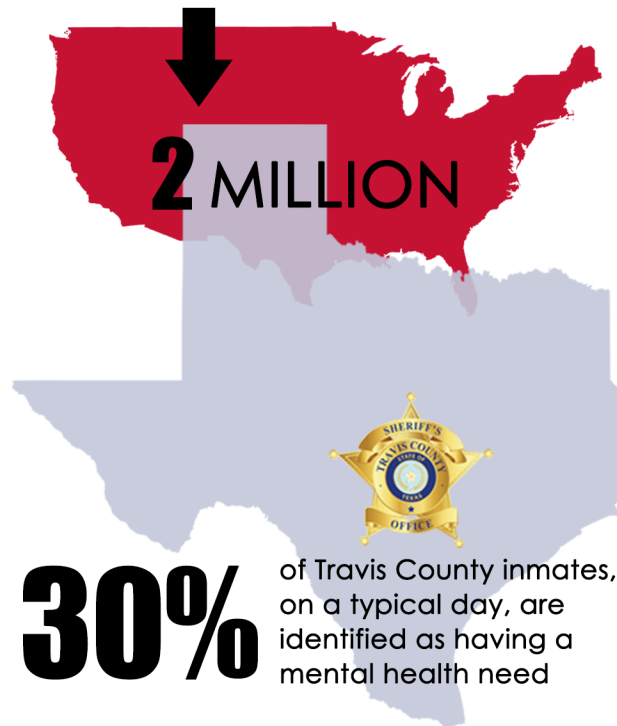


Sincerely,

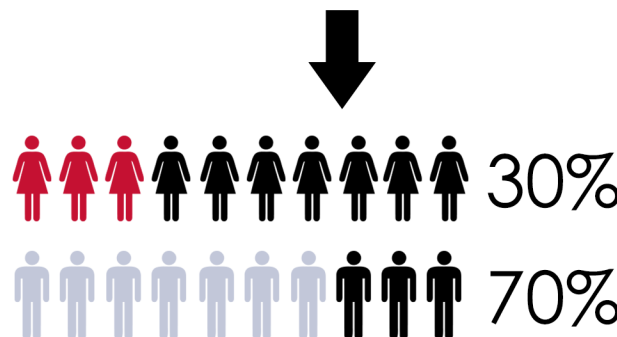
Sally Hernandez

SALLY HERNANDEZ
Sheriff, Travis County

ANNUAL JAIL BOOKINGS THAT INVOLVE A PERSON WITH A MENTAL ILLNESS ACROSS THE NATION



OF THESE



CRISIS INTERVENTION TEAM

A Crisis Intervention Team (CIT) model is a collaborative approach to safely and effectively address the needs of persons with mental illnesses, link them to appropriate services, and divert them from the criminal justice system if appropriate.

TCSO CIT is a team of specially trained deputies who respond to a person in a mental health crisis. They are required to complete the Texas Commission on Law Enforcement (TCOLE) Mental Health Certification course consisting of 40 hours, and many are cross-trained in Crisis Negotiation as well.

You can learn more about our team at:

www.tcsheriff.org/CIT

GOALS OF CIT

- ★ End crisis using de-escalation techniques
- ★ Less need for the use of lethal force
- ★ Reduction in injuries to mental health consumers
- ★ Reduction in deputies' injuries
- ★ Reduction in emergency room recidivism
- ★ Jail Diversion
- ★ Reduction in civil litigation
- ★ Improvements in community relations

BENEFITS OF CIT

- ✓ Crisis Response is immediate
- ✓ Arrests and use of force decrease
- ✓ Deputy injury rates during crisis events decline
- ✓ Under-served consumers are identified by deputies and provided with care
- ✓ Deputies are better trained and educated in verbal de-escalation techniques
- ✓ Decrease in liability for health care issues in the jail
- ✓ Cost savings